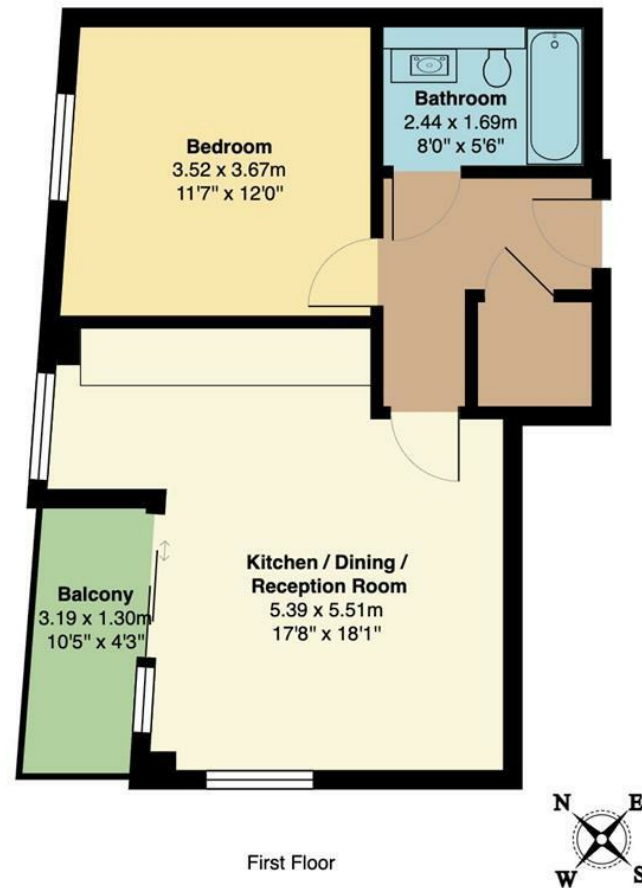


THE STOW BROTHERS

EST 2014

SALES/LETTINGS/NEW HOMES/MANAGEMENT

 Aubrey Road, London
Offers In Excess Of £375,000 Leasehold
1 Bed Apartment



Total Area: 49.5 m² ... 533 ft² (excluding balcony)
All measurements are approximate and for display purposes only



Energy Efficiency Rating		
	Current	Potential
Very energy efficient - lower running costs		
(92 plus) A		
(81-91) B	81	81
(69-80) C		
(55-68) D		
(39-54) E		
(21-38) F		
(1-20) G		
Not energy efficient - higher running costs		
England & Wales	EU Directive 2002/91/EC	



➔ E17 Office
236 Hoe Street
E17 3AY
0203 397 9797
hello17@stowbrothers.com

➔ E11 Office
117a High Street
E11 2RL
0203 397 2222
hello11@stowbrothers.com

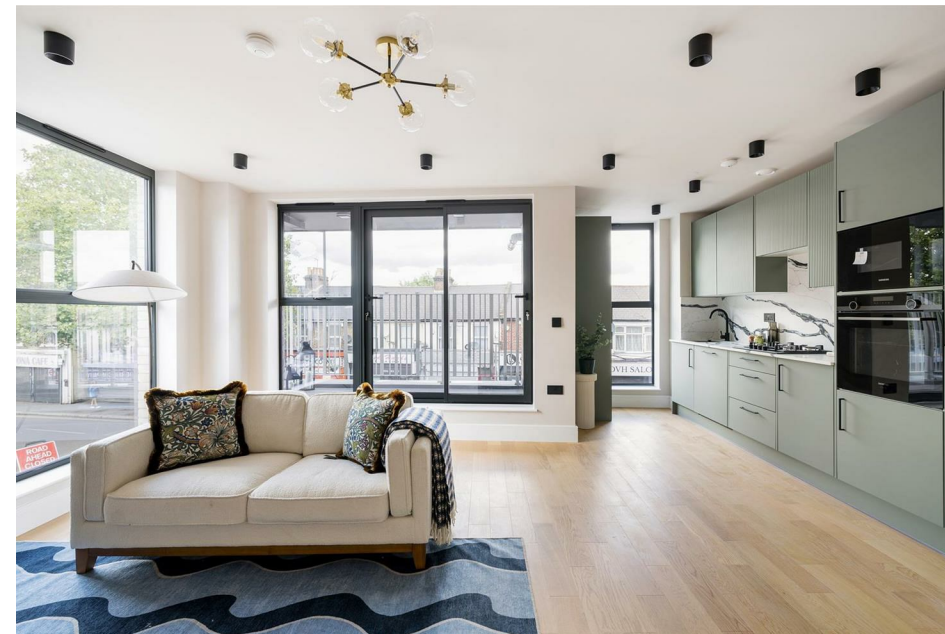
➔ E4 Office
1 Bank Buildings,
The Avenue, E4 9LE
0203 369 6444
hello4@stowbrothers.com

stowbrothers.com
f @stowbrothers



Features

- Modern One Bedroom Apartment
- Arranged on First Floor
- Open Plan Kitchen and Living Room
- Private Balcony
- Short Walk to Walthamstow Village
- Moments from LLOYD Park
- Close to Lloyd Park and William Morris Gallery
- Short Bike Ride to Walthamstow Wetlands
- Ten Minute Walk to Walthamstow Central Station



WHAT ELSE?

Walthamstow Central Station is within easy reach, offering fast connections via the Victoria Line and Overground, making commutes into central London swift and seamless. For additional Overground links, Walthamstow Queens Road is also nearby, opening up convenient routes across the city.





➡ IF YOU LIVED HERE...

This beautifully presented home unfolds across the first floor of this development, offering a harmonious blend of indoor comfort along with a private balcony. A wide entrance hall leads into a spacious open-plan kitchen, dining and reception area. Soft green cabinetry is paired with striking marble-style surfaces and fluted upper cupboards. Timber panelling beneath the staircase adds a stylish focal point, while full-height glazing and doors open onto the private balcony.

The double bedroom is a perfect retreat, with an expansive window casting natural light over the space. The bathroom being finished in a contemporary mix of gloss marble-style tiles and soft grey vertical ceramics, framed in black for contrast, with a deep bathtub set beneath a striking tiled feature wall and a rainfall shower above.

Step outside and you'll find a vibrant neighbourhood rich in culture, green spaces and local favourites. Lloyd Park is just moments away, offering wide open lawns, a lively weekend market and the renowned William Morris Gallery, surrounded by gardens and mature trees. For a change of pace, make your way to Walthamstow Village, one of London's most characterful urban enclaves. Here, winding streets and pretty cottages set the scene for a thriving mix of independent shops, cosy cafes and destination dining. Enjoy a laid-back meal at Eat 17 or settle in at The Nags Head, a local institution known for its warm atmosphere and classic pub fare. The recently opened Soho Theatre brings a new creative energy to the area, while the Wood Street Indoor Market is a treasure trove of vintage goods and collectibles. Walthamstow Wetlands, Chestnut Fields and the handsome Town Hall grounds all add to the area's wide appeal.

